



EXPLORE THE POSSIBILITIES



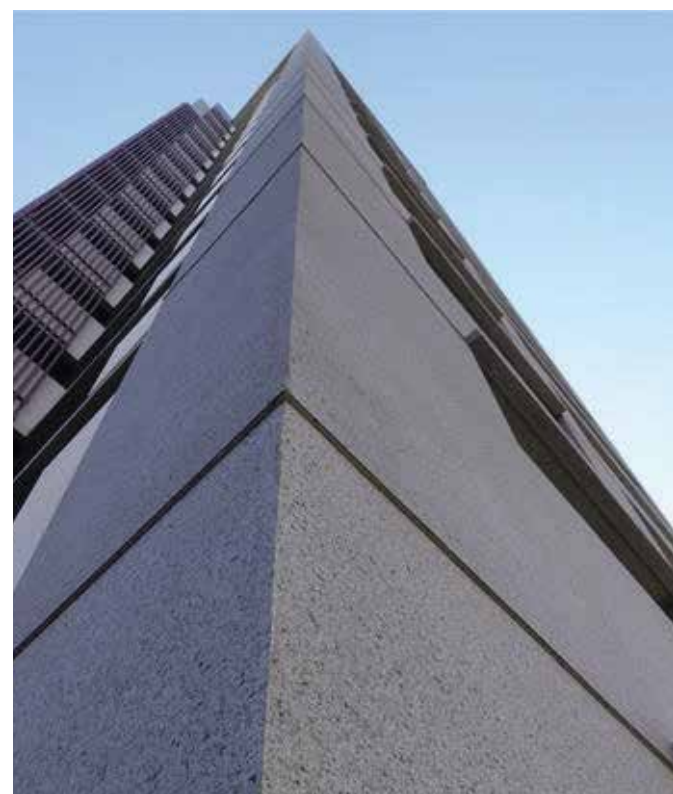
CRACK RESISTANT SPRAY COATING

EXTERIOR / INTERIOR MULTI SURFACE GRANITE EFFECT COATING

Introducing the revolutionary Infinity Effects Spray Granite™ System, meticulously crafted over years of engineering to offer a truly unique product that boasts unparalleled versatility. With the ability to be applied to nearly any surface and for various applications, our system stands out from the rest. Whether you need to enhance the appearance of exterior or interior walls, industrial flooring, decorative flooring, internal or external flooring, metal beams, ferrous and non-ferrous metals, plastic PVC gutters, kitchen countertops, doors (internal and external), or timber fencing, our spray granite system delivers exceptional results. Thanks to the expertise of our dedicated Infinity Effects team and skilled chemists, we have transformed this product into an absolute marvel within the coating industry, revolutionizing our perception of granite.

With our groundbreaking Infinity Innovating Coatings™ technology, we have successfully developed multiple build-ups for our spray granite system, all while prioritizing sustainability and eco-friendliness in both our company and our products. Our Infinity Effects Spray Granite™ is a fast-drying, odor-free, non-toxic, and environmentally friendly coating. It incorporates advanced technology that produces remarkably realistic imitation granite stone effects. Moreover, it offers a wide range of colors and unlimited color combinations, while also being anti-fungal, anti-mildew, alkali-resistant, waterproof, fire-resistant, and highly resistant to UV rays, weather conditions, and chemicals. This coating is washable, highly resistant to scuffs, non-fading, and exceptionally durable. It provides extensive coverage, easy application, and requires minimal maintenance. Unlike real stone or traditional ceramic, our Infinity Effects Spray Granite™ system eliminates safety concerns by preventing spalling.

Order your Infinity Effects Spray Granite™: directly from Infinity Effects™ or through our global distribution agents. Please note that all Infinity Effects products are sold according to our Standard Conditions of Sale. While we aim to provide helpful advice, we can only guarantee results for uses explicitly confirmed in writing by Infinity Effects and the specified representative.

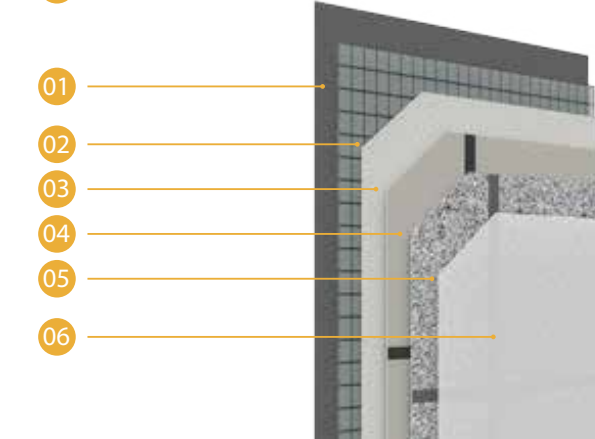


COMPARISON

	IE Spray Granite	Epoxy Flake Flooring	Epoxy Floor Paint	Concrete	Polished Concrete	Decorative Epoxy Resin flooring
UV Stable	✓	✗	✗	✗	✗	✓
Chemical Resistant	✓	✓	✓	✗	✓	✓
Stain Resistant	✓	✓	✗	✗	✓	✓
Anti-Bacterial	✓	✓	✓ / ✗	✗	✗	✓
Anti-Slip	✓	✓	✓ / ✗	✗	✗	✓ / ✗
High Scuff Resistance	✓	✓	✓	✗	✓	✓
Easy Application	✓	✓	✓	✗	✗	✗
Easy Maintained, Cleaned	✓	✓	✓	✗	✓	✓
Choice Of Texture	✓	✗	✗	✗	✗	✓
Notes:	1 Day Install, Quick Dry Time, Full Cure 3 Days,	1-2 Day Install, Full Cure 7-14 Days, More Steps Required To Complete	Rolled on usually 1-2 Part System (Paint peels & flakes overtime recoat often needed)	Weathering quickly leads to cracks & damp. Staining occurs easily	Hard coating will crack if any movement. Cold underfoot. If not sealed penetration by moisture can lead to growth of mold or mildew.	Long prep and install process 3-7 days, can be a nightmare if not installed correctly by professional. Even professional floors discolour fast and have small defects.

PROCESS FLOW

- 01 Prepare sub-base (Prep will verify dependent on sub base type)
- 02 Stick the fiberglass nets (Can skip)
- 03 Roll the primer
- 04 Roll the hydro paint coating
- 05 Spray the main material
- 06 Roll the topcoat

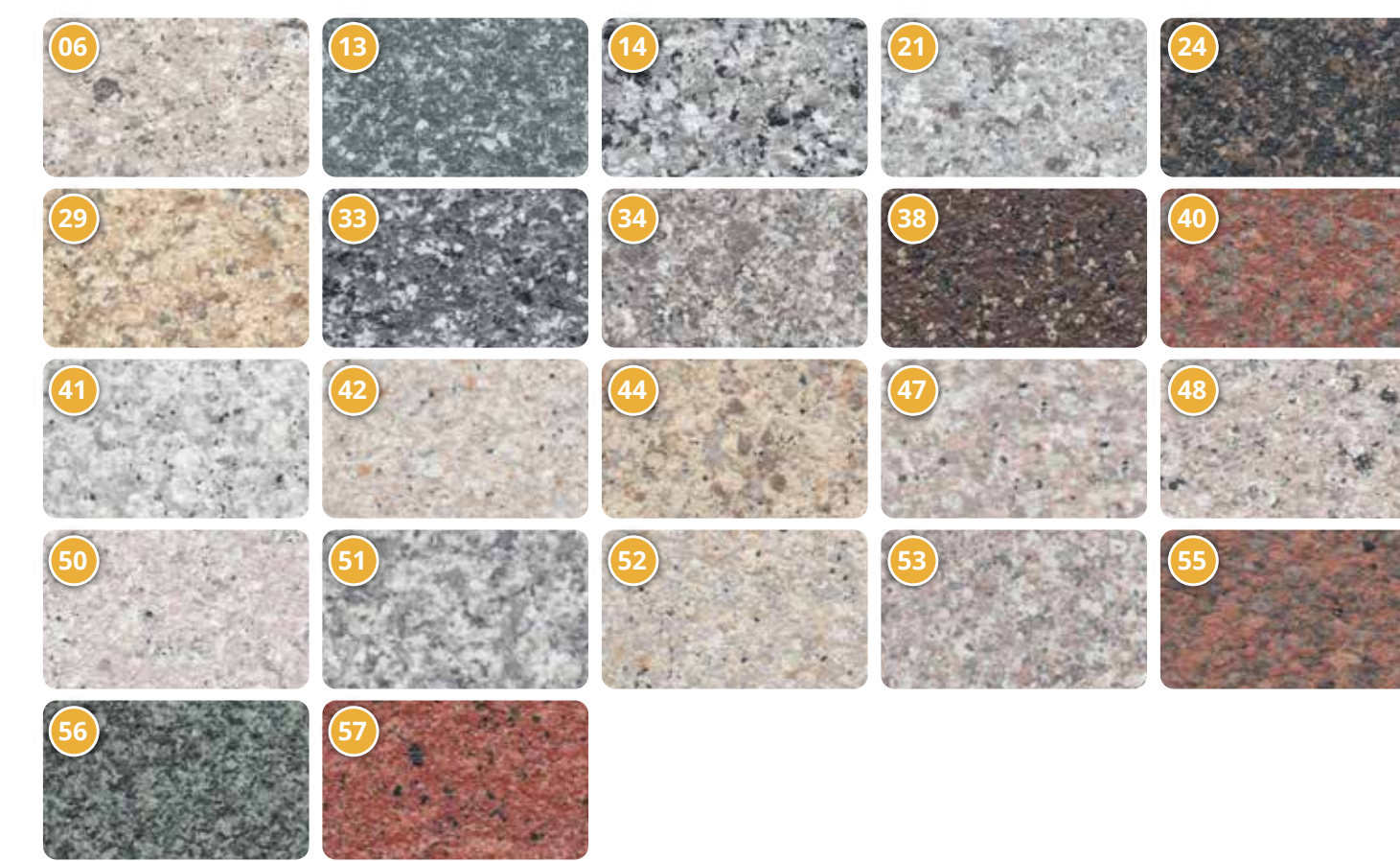


SPRAY GRANITE ADVANTAGES

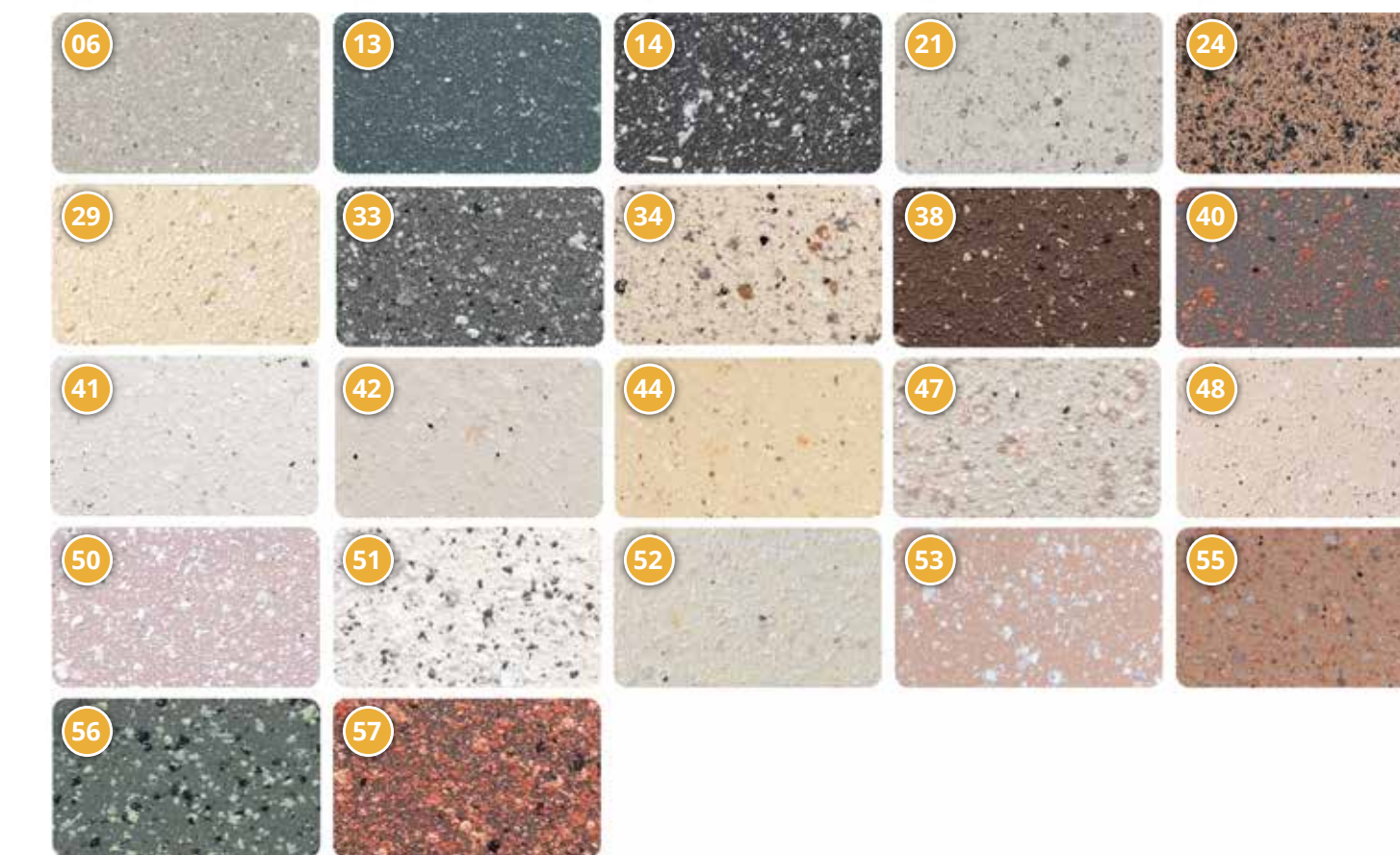
- High Water Retention
- Natural Granite Effect
- Anti-Cracking Properties
- No Overlapping Defects
- Environmentally Friendly
- Low Wastage Of Material
- Easy Application
- Long Service Life
- Anti - Bacterial

TECHNICAL PARAMETERS	COMPOSITION
Property	Solvent free (Water based)
Dry film thickness	2mm/layer
Coverage	Dependent On Desired Finish
Drying time (surface dry)	>8h (25-27°C) (77 - 81°F)
Touch dry	<4h (25-27°C) (77 - 81°F)
Drying time (complete)	>24h (25-27°C) (77 - 81°F)
Coating layer	2-3 layers
Service life	> 10 years
Paint colors	Granite stone catalog
Application way	Spray gun
Storage	<30°C, cool, dry
	Resin
	Natural sand and stone particles
	Inorganic filler
	Water

Infinity Effects Spray Granite™ Full-Cast Colour Chart



Infinity Effects Spray Granite™ Semi-Cast Colour Chart



DISCLAIMER: Customers are advised to thoroughly read and adhere to the instructions provided to ensure the optimum finish and performance of our products. The information presented is based on results gained from experience and tests and is believed to be accurate. However, we do not accept liability for any loss or damage attributable to reliance on this information, as conditions of use may lie outside our control. Any deviation by the user from these instructions may affect the performance of the products, and therefore, such actions are not advised. In such circumstances, Infinity Effects will not be held responsible. Users should always conduct sufficient tests to establish the suitability of any products for their intended applications. While we strive to ensure consistency of color in production, slight variations in shade may occur from batch to batch. **Note:** If you are unsure about the compatibility of Infinity Effects Coating with the substrate surface, we strongly recommend conducting a small test in a discreet area before applying it to the entire floor. This precaution will help ensure a successful and satisfactory outcome.